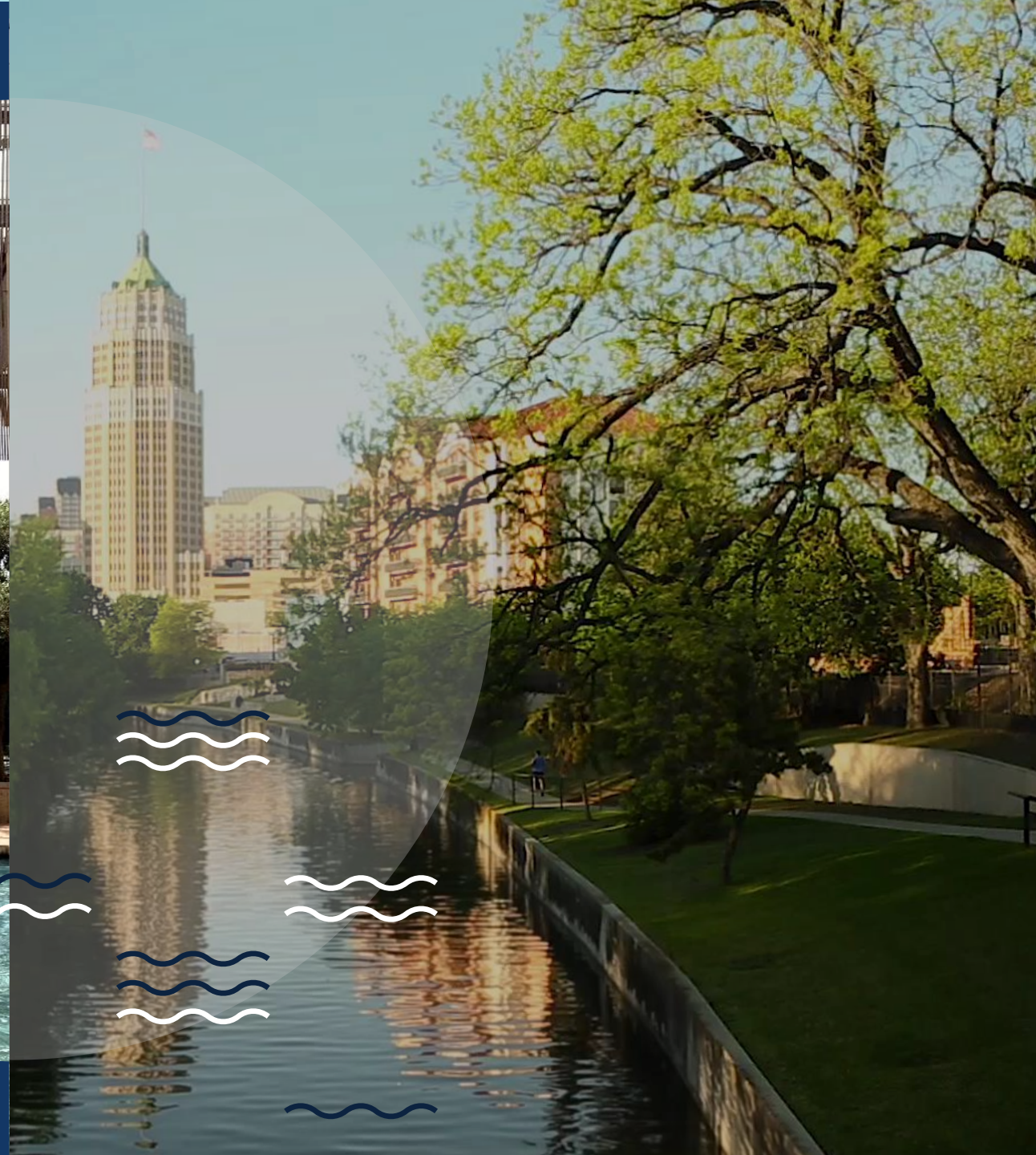




The University of Texas
at San Antonio™

Faculty Senate Updates

Dr. Taylor Eighmy
Dr. Kimberly Andrews Espy
October 11, 2018



President's Distinguished Achievement Award

Innovation and Impact (I²)

- One award for a faculty-led team (up to five people)
- Recognizes creative and innovative projects of high impact in *any* area relevant to UTSA's mission
- Selection criteria:
 - Degree of innovation and creativity
 - Effective use of partnerships
 - Impact/Outcomes
- Faculty and chairs may submit nominations to the team lead's home college

Vice Presidential Searches

Vice President for
Business Affairs

Vice President for
Inclusive Excellence

Vice President for
Information Management
& Technology



Vice Provost, Academic Finance & Administration

Start date, December 3

College Business Officer at AAU
& R1s since 2004

5 years non-profit & international
finance

25 years Wall Street Finance &
Real Estate experience

Yale BA, Dartmouth MBA



Academic Affairs Leadership Searches

Dean, College of Sciences

Vice Provost, Graduate Studies /
Dean, Graduate School

Vice Provost, Academic
Innovation

Vice Provost, Faculty Affairs

College of Public Policy planning



Initiative Overview

Classroom to Career

IN BRIEF

An integrated, campus-wide framework to identify, connect and align existing experiential learning programs and to pursue partnerships that could lead to new or expanded programs.

LAUNCH

September 2018

TARGET

75% student participation in some form of experiential learning by graduation

IMPACT

Increases in student engagement will directly support UTSA's student retention efforts and strengthen partnerships in the San Antonio community.

PARTNERSHIP OPPORTUNITIES

Internships, co-ops, field experiences, service learning

DESTINATION

A Model for Student Success



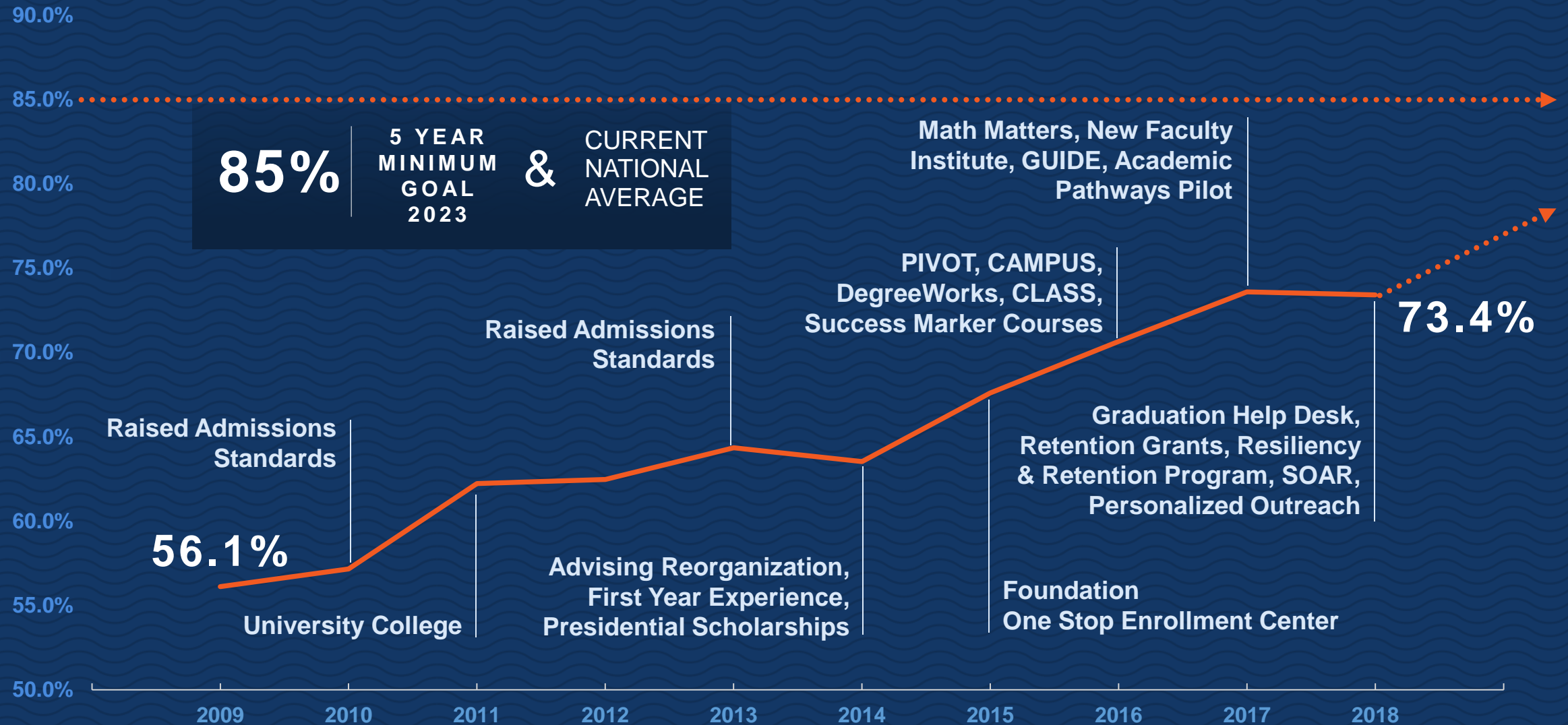
Honors College Residence

Provide Honors students integrated living:learning experiences

- increase capacity and capabilities
- deepen student experience
- enhance UTSA's reputation

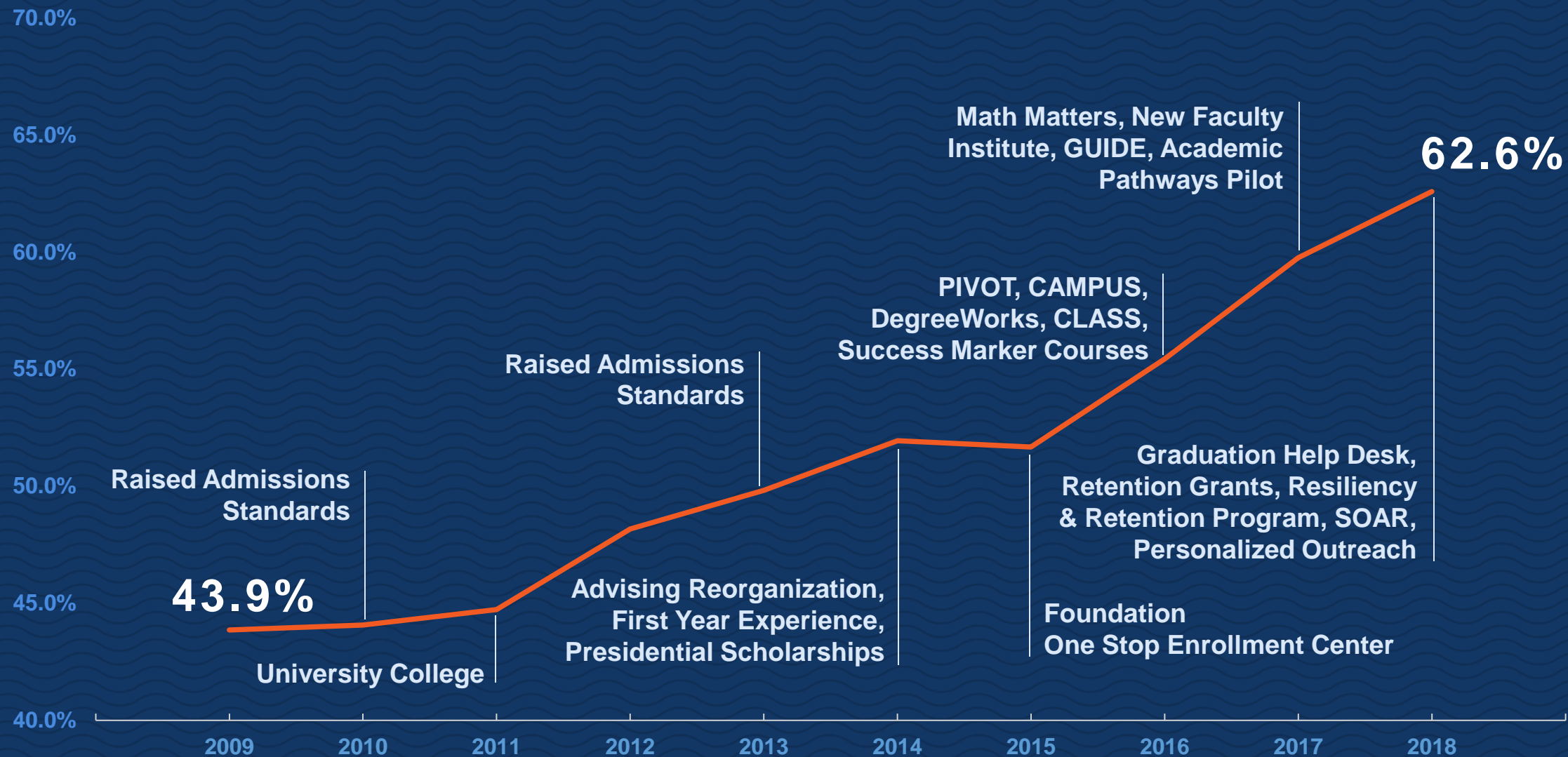


First-Year Retention



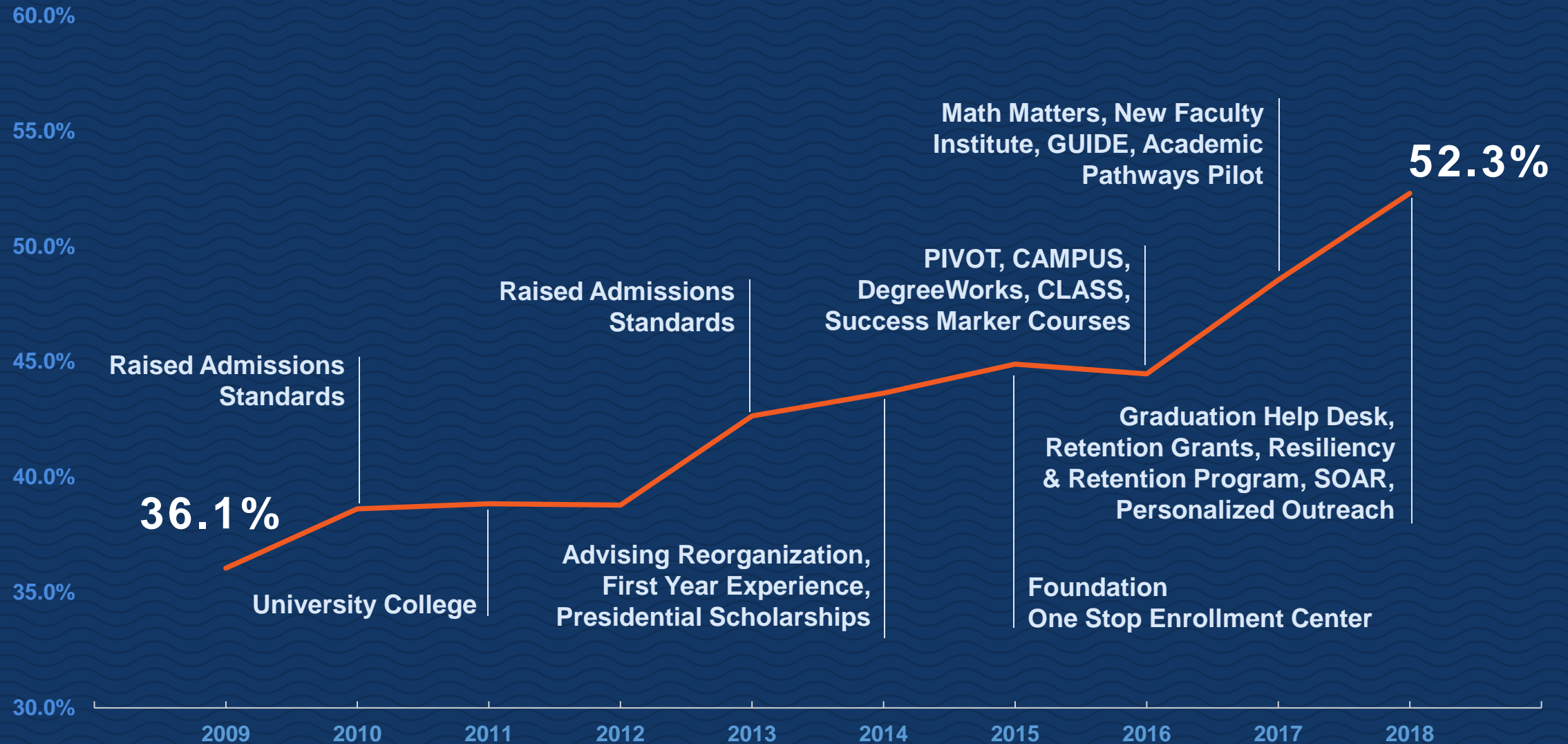
Data as reported to the Integrated Postsecondary Education Data System (IPEDS)

Second-Year Persistence



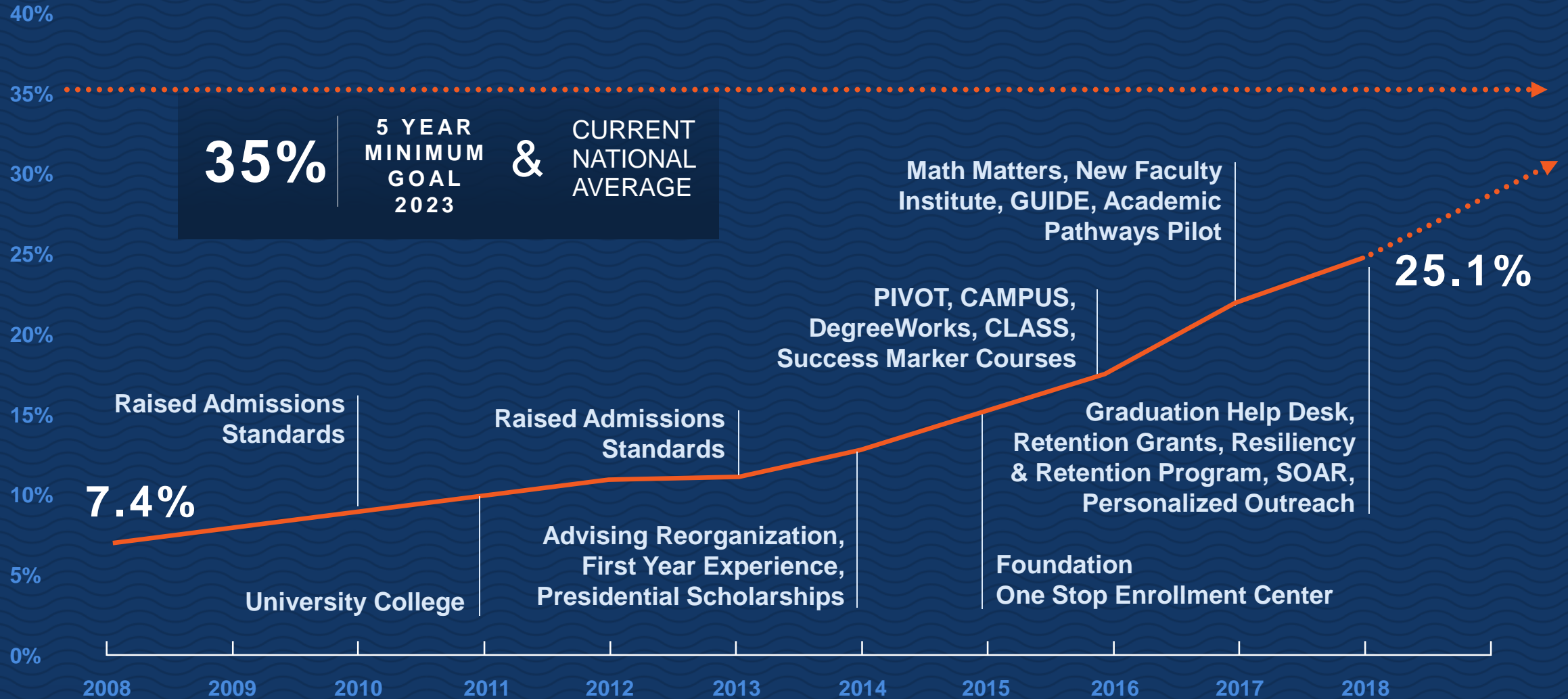
Data as reported to the Integrated Postsecondary Education Data System (IPEDS)

Third-Year Persistence



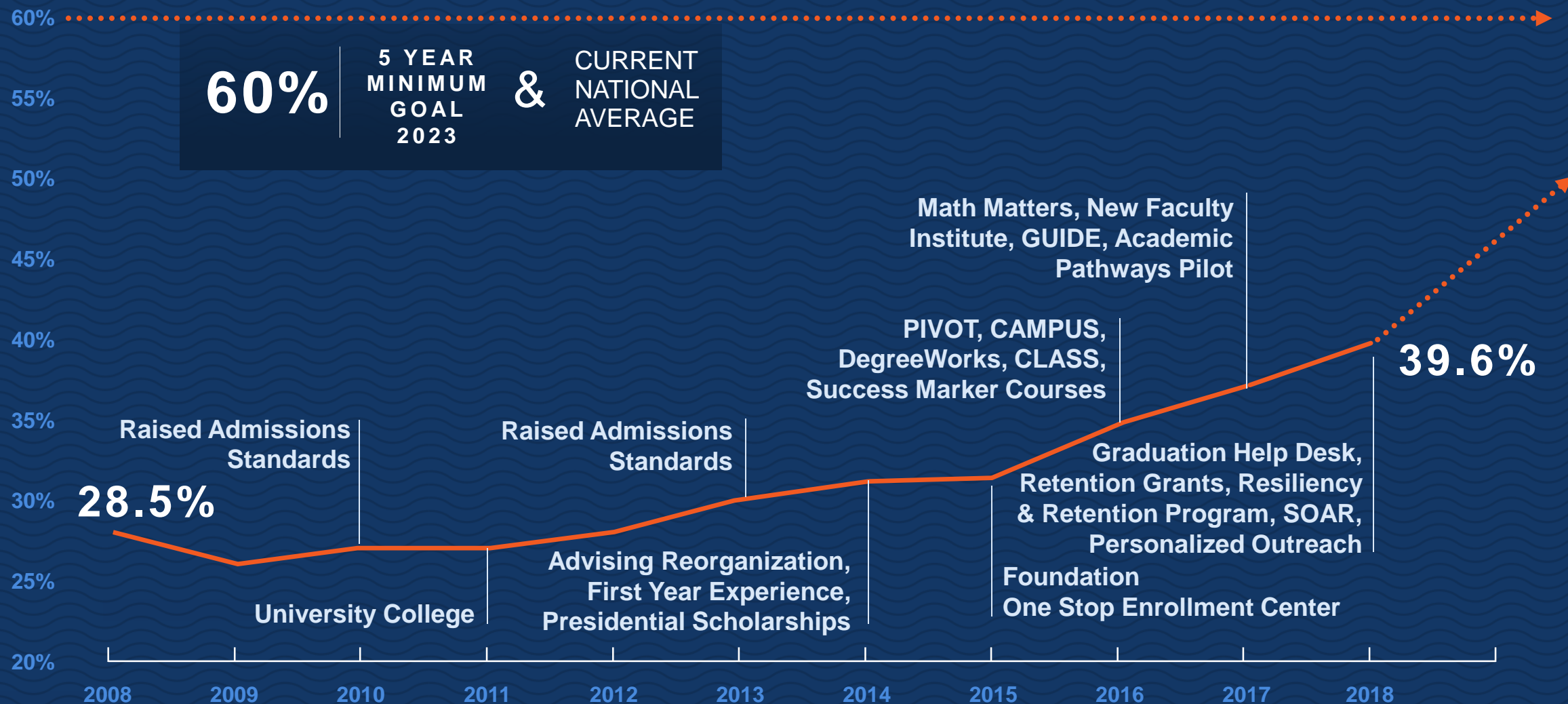
Data as reported to the Integrated Postsecondary Education Data System (IPEDS)

Four-Year Graduation Rates



Data as reported to the Integrated Postsecondary Education Data System (IPEDS)

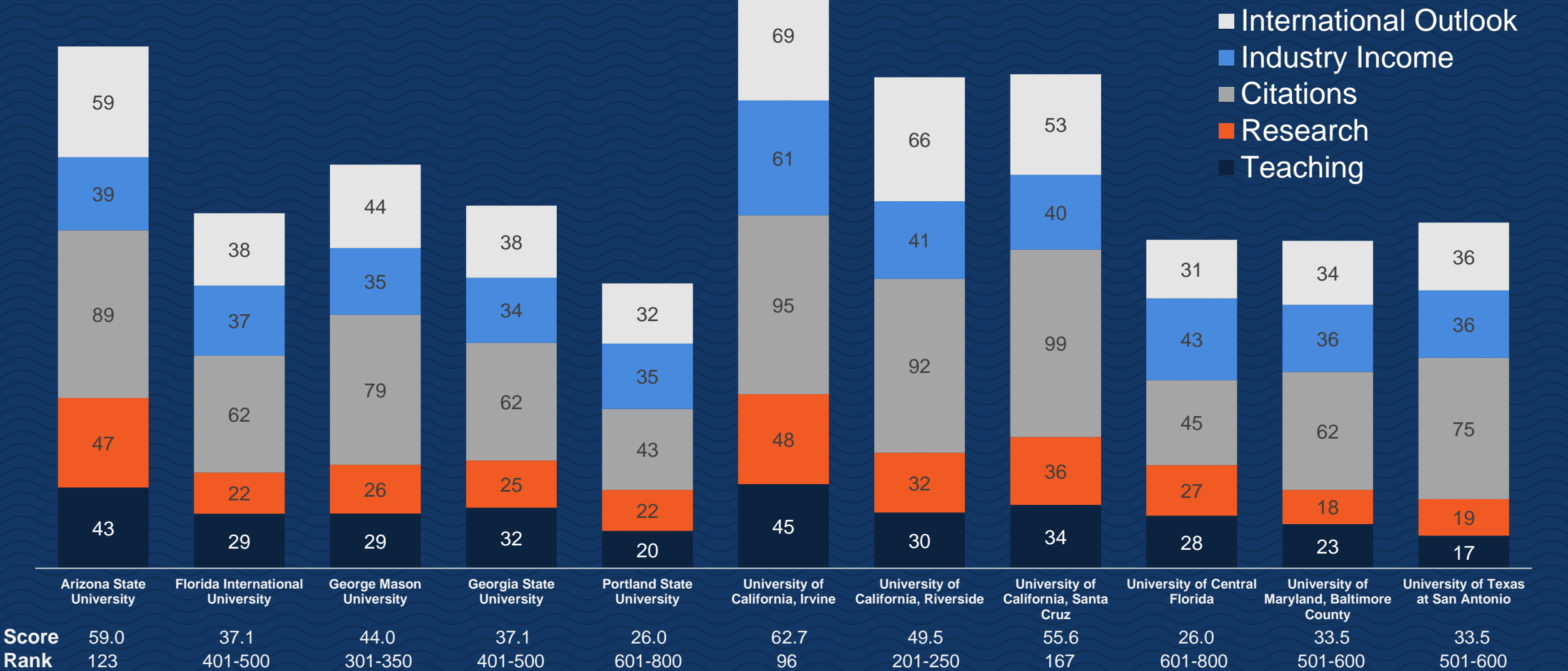
Six-Year Graduation Rates



Data as reported to the Integrated Postsecondary Education Data System (IPEDS)

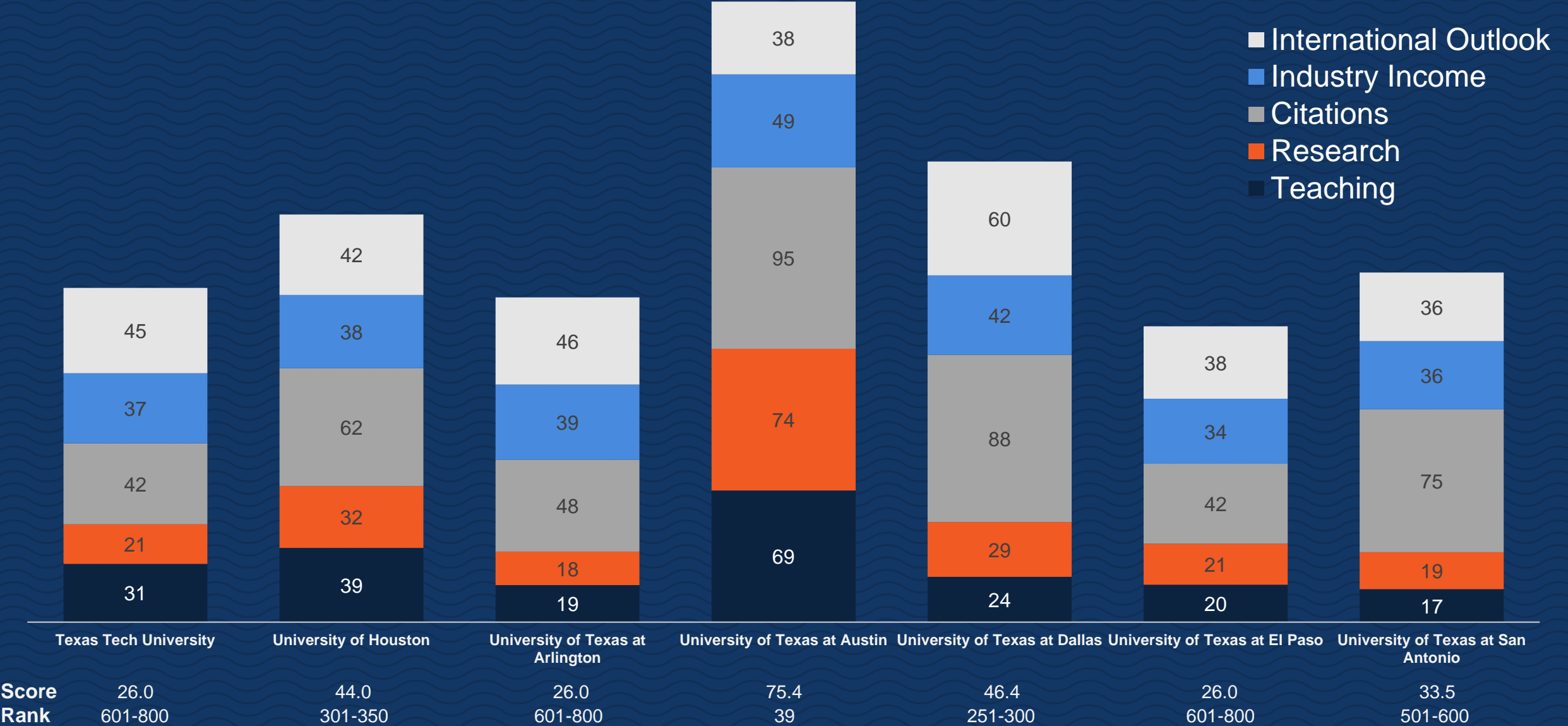
Peer Models

2019 Times Higher Education World University Rankings



Texas Institutions

2019 Times Higher Education World University Rankings





Graham Weston
\$15 Million Gift

For UTSA's proposed
School of Data Science



Expanding the Downtown Campus **Land Transfers Valued at \$13 Million**

Parcels from the City of San Antonio and Bexar County for the National Security Collaboration Center, the School of Data Science and a new home for the College of Business

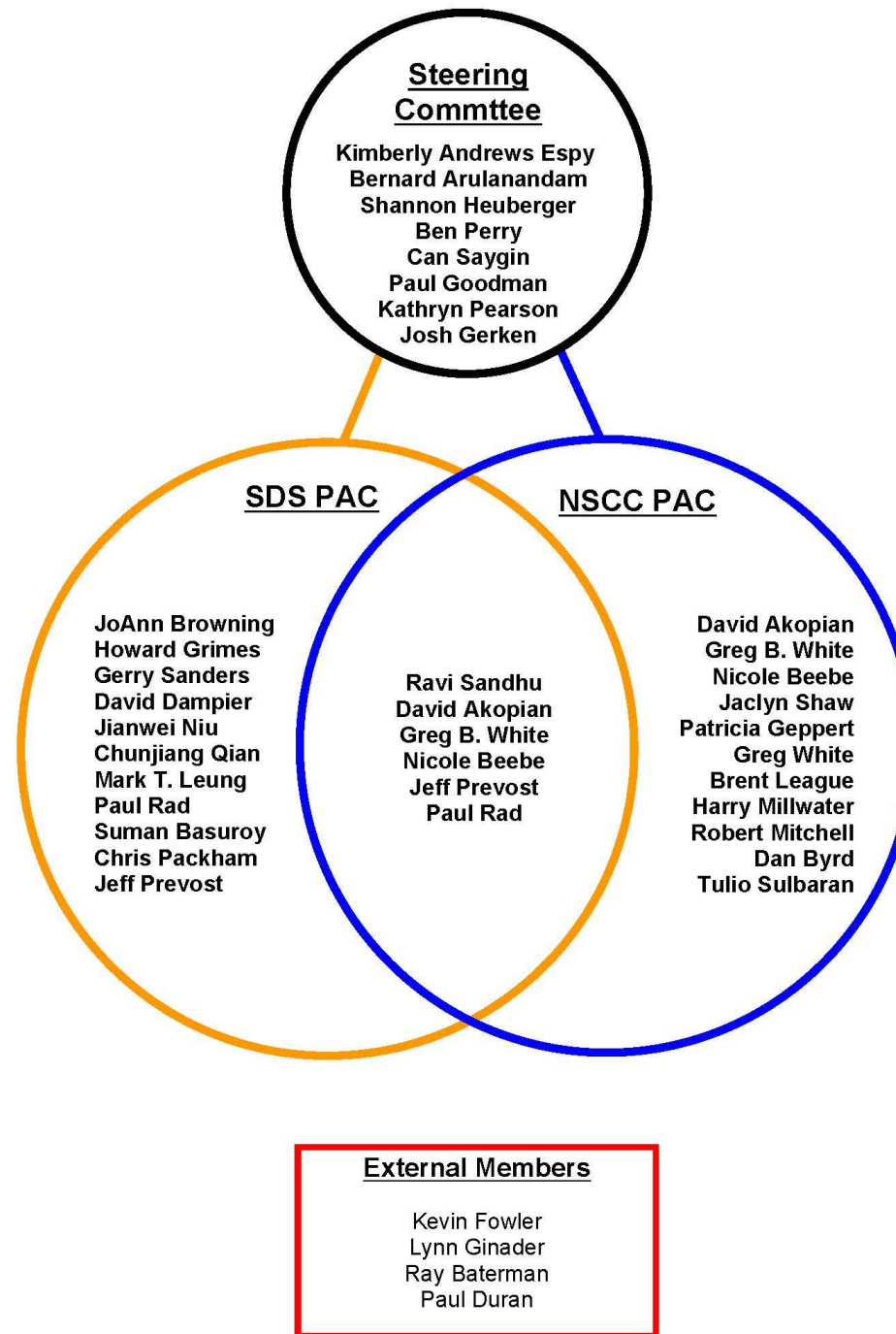


A series of horizontal wavy lines in blue and white, stacked vertically on the left side of the dark blue background.

SDS/NSCC Planning

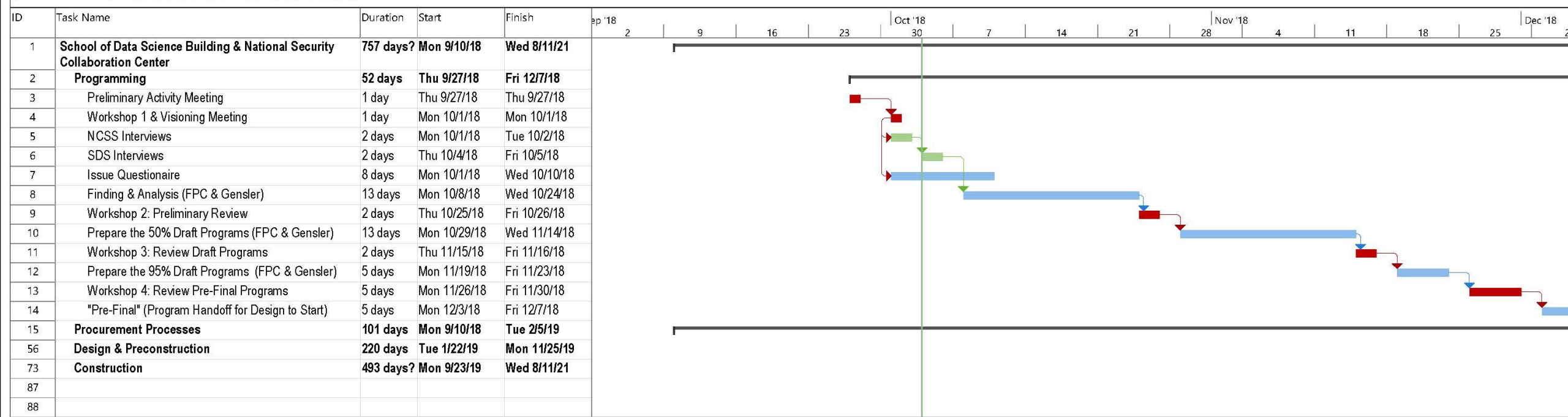


Faculty-Centered Planning Process





Programming Schedule





SDS/NSCC Planning

- Parking
- Transportation
- Environmental upgrades





Cattleman's Square
Residential Tower

Continental Hotel
Residences

Current Downtown
Campus Footprint

New National Security
Collaboration Center

Relocated
College of Business

New School of
Data Science

Ten Year Plan 2018-2028

PHASE 1: 2018-2023 PHASE 2: 2023-2028

UTSA[®]

The University of Texas
at San Antonio[™]

Questions?
Thank you!

